



# The Delmarva Farmer Classifieds

Online Edition | [www.americanfarm.com](http://www.americanfarm.com) | 1.800.634.5021

## REAL ESTATE AUCTION

**SATURDAY – SEPT. 26, 2020 @ 11:00 AM**

**FARM LAND 149 Ac. +/-**

**JD TRACTOR & EQUIPMENT @**

**10:00 AM**

**LOCATION:** 18379 Zion Road, Marydel, Maryland 21649

**EQUIPMENT:** JD 2210 Diesel Tractor (420 hr.) & JD Loader, JD LX4 Rotary Mower, JD Trail Gator 6x4 (gas – 2,714 hr.), JD Z915B Zero Turn Mower (gas), Scrape blade 5', JD 4' Over seeder, Garden disc, Sears Alum. 14 boat – Johnson 9.9 motor & Loadrite Trailer, Pasture drag, Single axle 14' trailer, Troy-bilt tiller, Pressure washers, hunting decoys and other items. \*Due to COVID19 Face Masks are required. **PREVIEW: SAT. – SEPT 26th: 8:00 AM – 10:00 AM**

**TERMS:** Cash or approved check with current letter from your bank guaranteeing funds. All items sold "AS-IS", "WHERE-IS" with no guarantee. No Buyer's Premium. 3% Credit Card M/C, Visa. 6% Maryland Sales Tax.

**REAL ESTATE:** Farm containing 149 acres, more or less, approx. 100 acres tillable, improved with a pole barn approx. 70' x 100' and attached living quarters with two bedrooms, two baths, living room, kitchen, utility room, deck area along with other out buildings and a pond.

**TERMS:** A deposit of Fifty Thousand Dollars (\$50,000.00) by cash, cashier's or certified check will be required at the time place of sale. The balance of the purchase price shall be due at settlement, which shall be within forty-five (45) days from date of sale. If purchaser fails to go to settlement, the deposit shall be forfeited. The successful bidder will be required to sign a contract of sale containing the following terms: Buyer shall

pay for all recordation, transfer taxes and Agricultural Transfer Tax (if required). Buyer shall pay for title examination, title insurance (if required) and all attorneys and settlement fees. The property is sold in "AS-IS" condition **WITHOUT WARRANTIES** of any kind by either the Seller or the Auctioneer. Seller has no knowledge of any environmental hazard, housing code or zoning violations; however, the property is being sold subject to any currently existing condition, problem or code violation and it is the Buyer's responsibility to bring the property into compliance with all codes. Taxes and other public charges shall be adjusted to date of settlement. The information contained in the advertisement was obtained from sources believed to be reliable, but is offered for informational purposes only. The Auctioneer and Seller do not make and representations or warranties, expressed or implied with respect to the completeness or accuracy of this information. Seller reserves the right to accept to reject any or all bids, however, it is the Seller's intent to sell the property. For more information or inspection of the property contact the Auctioneer. No Buyer's Premium. \*Due to COVID19 Face Masks are required.

**PREVIEW: SAT. – SEPT 26th: 8:00 AM – 10:00 AM**  
**Estate of Lucille Martone**

**A. CURTIS ANDREW AUCTION, INC.**  
**410-754-8826 / 410-310-1826**  
**[www.acurtisandrewauction.com](http://www.acurtisandrewauction.com)**



### EQUIPMENT

#### 1997 SPARTA HOPPER BOTTOM

1997 Sparta Hopper Bottom, New Tarp, 85% brakes, 65% rubber. Ready to work this fall. \$7,500. Call **410-708-0409**.

#### JD 7720 COMBINE

JD 7720 combine w/ no heads. \$5,000. Call Keith **302-745-9908**.

#### EQUIPMENT FOR SALE

CIH 2577 combine, 1020 31 ft. Grain head, 1083 cornhead, Easy Trail 500 grain cart, Great Plains 1800 Turbo Max, Flicker 231 funnel wagon, 3-6 wheel grain truck. All shed kept. Call **302-841-9290**.

#### DRAGO SERIES II

Drago series II 6 row corn head in excellent condition. \$27,500. Call **302-856-2158**.

#### 2001 JD 4600

2001 JD 4600 43 HP tractor for sale, MFWD, power shuttle transmission with PowrReverser, has JD 460 loader and forks. Tractor has 1329.6 hrs. on it. All filters and engine oil changed at 1325 hrs. Pictures are available. Tractor located on farm outside Cumberland, MD. Asking \$15,000. Delivery available. Call **240-522-0841**.

#### 1970 OLIVER ROWCROP

1970 Oliver Rowcrop 1555, show ready; 1951 Oliver Rowcrop 88, show ready. Call **302-331-4289**.

#### EQUIPMENT FOR SALE

MF 4015 rotary cutter \$5,500; 1992 Merritt aluminum hopper \$8,500; 2015 Manac steel hopper \$24,500; 1985 Chevrolet 1 ton w/ utility body \$2,500. Call **302-875-2518**.

### EQUIPMENT

#### EQUIPMENT FOR SALE

JD 750 15' no til drill. \$12,000; 300 gal portable fuel tank w/ 12 volt pump \$1,000; portable gas powered air compressor \$500; IH 844 cornhead. Call **410-758-9085**.

#### HAGADORN 5440

Hagadorn 5440 extrovert spreader, like new, \$28,000; Case IH 5500 30' drill, \$6,000. Call **302-531-6290**.

#### 10 HP. GSI FANS

Two GSI 10 HP single PH centrifugal fans with LP heaters. \$2,800 per set. Smyrna, DE. **302-670-4053**.

#### NH 488 MOWER CONDITIONER

NH 488 mower conditioner, shed kept, 9 foot cut, very good condition. Call **804-339-0722**.

#### JD S670

4x4, Loaded. \$139,000 No Money Down, NO PAYMENT FOR 1 YEAR! 1 Year/100% Warranty on Engine and Transmission **ZeisloftEquip.com 800-919-3322**

#### JD 930F HEAD

JD 930F head \$9,000. Sold by RS Farms **410-829-1584**.

#### EQUIPMENT FOR SALE

JD 9550 combine, shed kept, 2100 machine hours, 2600 engine hours. Nice shape asking \$60,000. 2004 Rogator 1264 sprayer with 90 foot booms and like new tires, 1200 stainless tank, nice shape and shed kept, asking \$60,000. Call **410-251-3296**.

#### JD 630F, 625F

Very nice. NO PAYMENT FOR 1 YEAR. Largest Selection of Heads Around! Zeisloft Farm Equipment **800-919-3322**

### EQUIPMENT

#### JD 608C

Corn Head. Brush Chains, Knife Rolls, Hyd Deck. Very Nice NO PAYMENT FOR 1 YEAR! **ZeisloftEquip.com 800-919-3322**

#### 1070 CASE TRACTOR

1070 Case Tractor SN#8702753. Call Billy **443-521-5609**

#### JD 450 GRAIN DRILL

JD 450 23x6 grain drill with press wheels. \$4,500. Pictures available. Call Darrell at Ag Solutions of VA **804-514-9845**.

#### 1998 CASE IH 2388

Combine with rear wheel assist. Drive tires 95%. \$20,000 update in Oct. 2018, \$5,000 in Oct. 2019. Includes 20 ft. 1020 flex head, this combine has been well taken care of and always stored in shed. 4717 engine hrs.; 3385 rotor hours. \$45,000.00 with head. Call Darrell Ag Solutions of VA **804-514-9845**.

#### CASE IH 5500

Case IH 5500 30ft. Grain drill. 7.5" spacing. \$12,000. Call **302-632-1706**.

#### 2018 JD 5075

2018 JD 5075 tractor with 520 m loader, 84" bucket and 3rd loader valve. 140 hrs, 3 year warranty left. Dual rear remotes \$42,500. Pictures avail. Call Darrell of Ag Solutions of VA **804-514-9845**.

#### EQUIPMENT FOR SALE

Your choice for \$99,000! 2009 JD 9670STS with 2300 sep hrs or 2011 JD 9770STS w/2700 hrs. NO PAYMENT FOR 1 YEAR! 1 Year Motor/Trans Warranty. (40) more combines available. **ZeisloftEquip.com. 800-919-3322**.

## ESTATE AUCTION FIREARMS & RELATED ITEMS SATURDAY – OCTOBER 3, 2020 10:00 AM

**LOCATION:** A. Curtis Andrew Auction, Inc., 25631 Auction Rd, Federalsburg, MD 7 miles north of Federalsburg, MD and 10 miles south of Denton, MD (American Corner)..

**RIFLES / SHOTGUNS:** (2) Winchester mod. 1894 / 30WCF Rifles Rd. Barrel, Winchester mod. 1894 / 32WC Rifle, Winchester mod. 1866 / Kings Imp. Rifle, Winchester mod. 1873 / 22 cal. Rifle Oct. Barrel, Winchester mod. 1876 rifle Oct. Barrel, Winchester mod. 92 / 32WEF Rifle Oct. Barrel, Winchester mod. 71 / 348 Win. Rifle Rd. Barrel, Winchester mod. 97 / 12ga. Riot Shotgun, Winchester mod. 70 / 22 Hornet Rifle Bushnell Scope, Winchester mod. 1895 – 30/40 Krag Rifle, Winchester mod. 90 / 22 cal. Rifle Oct. Barrel, Winchester mod. 90 / 22 cal. Rifle Rd. Barrel, (3) Winchester mod. 61 / 22 cal. Rifle Rd. Barrel, Winchester mod. 61 / 22 Win. Mag. Rd. Barrel, (4) Winchester mod. 62A / 22 cal. Rifle Rd. Barrel, Winchester bolt action 22 Hornet Rifle Bushnell scope, (2) Winchester mod. 12 / 12ga. Shotguns, Winchester mod. 12 Super Speed 12ga. 3" Super X, Winchester mod. 2 / 20ga. Shotgun, Winchester mod. 1903 / 22 cal. Rifle, (3) Winchester mod. 42 / 410 ga. 3" shotguns, Winchester mod. 1894 – 30/40 cal. Rifle Oct. Barrel, Winchester mod. 55 / 32WS Rifle Rd Barrel, Winchester mod. 1892 / 38WCF Rifle Oct. Barrel Winchester mod. 12/ 20 ga. Shotgun, Winchester mod. 55 / 22 cal. Rifle, Winchester mod. 12 / 12 ga. Skeet shotgun, Winchester mod. 43 / 218 Bee Rifle Scope Winchester mod. 70 / 257 Roberts Scope, Winchester mod. 1894 / 30WCF Rifle, Winchester mod. 72A / 22 cal. Rifle, Winchester mod. 12/ 12ga. Trap shotgun, Remington mod. 32 Skeet Shotgun 4 Barrel set in case, Browning A5 / 12ga. 3" Mag. Shotgun, Remington mod. 700 / 17 cal. Rifle Scope, Remington mod. 870 Special 12ga. Shotgun, Browning A5 "Light Twelve" 12ga. Shotgun, Remington mod. 11 / 12ga. Shotgun, Savage mod. 755A / 12ga. Shotgun, (15) US military rifles 30-06 cal., (14) US M1 / 30 cal. Rifles, Remington mod. 514 / 22 cal. Rifle, Remington mod. 34 NRA Taget 22 cal. Rifle, Marlin mod. 39A / 22 cal. Rifle, (2) US Springfield 1884 Trap Door 45-70 cal. Rifles, NU Arm Co. BAR style Rifle, Remington mod. 870 Express Super Mag. 12ga. NWTF, Benelli Nova 12ga. Camo, Charles Daly 12ga. Camo pump, Mossberg mod. 500 12ga. Camo pump, Remington mod. 870 Super Mag. 12ga. Mossberg mod. 835 / 12 ga. Camo, Winchester mod. 250 / 22 cal. Scope, Winchester mod. 1200 / 12ga. Shotgun w/Deer Barrel, and others.

**HANDGUNS:** Remington US Army mod. 1911 / 45 cal., (2) Colt Army mod. 1911 / 45 cal., US Army Colt mod. 1917 / 45 cal. DA Revolver, Mauser 7.65 cal., (4) Luger 9mm, (2) P38 / 9mm., P08 BYF1 / 9mm, S&W mod. 35 / 22cal. Revolver, Walther PPK 7.65 cal, Colt Officer mod. Mathc 38 Special Revolver, S&W US Army 1917 DA45 cal. Revolver, S&W 38 Special Air Weight Revolver, Colt military 38cal., Browning 9mm, (2) Colt New Frontier 22/22 Mag. Revolver 2 cyl. in box, Colt Army 45 cal. Revolver in box. S&W mod. 53 / 22 Mag. in box, Colt 357 Mag. SA Revolver in box, Colt 44 Special SA Revolver in box, Colt Army 45 cal. SA Revolver in box, Colt Cobra 38 Special Revolver, (2) Colt 25 cal., Remington 380 cal., Colt Cobra 38 Special CTG Revolver, Colt Police Positive 22 cal. Revolver, (2) Walther PPK 7.65 cal., Colt 32. cal., S&W 22 cal. Revolver, (2) Walther PP 7.65 cal., Luger Walton Mauser 9mm. Knob Handle in wood case, Colt US Army mod. 1901 DA38 Revolver, and many others.

**BLACK POWDER:** Flint Lock Rifle, Springfield 1860 Rifle, US Savage 1863 Rifle, US Milburn 1836 Rifle, (4) US Springfield 1884 Rifles, Kentucky Long Rifle, Virginia 1818 / 44 cal., (2) US Trenton 1863 Rifles, Richmond 1810 Rifle, US MT Wickham Phil. 1828 Rifle, Colt 1850 Revolver in box, Colt 31 cal. Revolver Oct. Barrel, (2) Conn. Valley 50 cal. Thompson Center 50 cal., Conn. Valley 45 cal. Optima Pro, Knight 12ga. US Hawken Comm. 1836-1976 58 cal., Knight 50cal. W/Leupold scope, Thompson Center Scout 50 cal. w/ scope and other.

**MISC:** Cannon 48 Gun Safe, Winchester 10ga Cannon, Bayonets, Swords, Military Ammo belts, Military helmet, large assortment of ammo and other items.

**NOTICE:** Due to COVID19 the state of Maryland requires a face mask to be worn to enter the building and to participate in the auction. Face masks will be required until further notice from the state of Maryland.

Continue to visit our web for more info and photos.

**PREVIEW:** Friday – Oct 2nd: 6:00 PM – 8:00 PM and  
Saturday – Oct. 3rd: 8:00 AM -10:00 AM

**TERMS:** Cash or approved check with current letter from your bank guaranteeing funds, unless you are known by the auctioneer. All items sold "AS-IS", "WHERE-IS" with no guarantee. 10% Buyer's Premium. 3% Credit Card, M/C, Visa. 6 % Maryland Sales Tax. All FFL regulations will apply to purchases.

**A. CURTIS ANDREW AUCTION, INC.**

Auctioneers: Curtis Andrew / Mike Roe, CAI, GPPA, CES / Miles Roe  
410-754-8826 / 410-310-1826  
www.acurtisandrewauction.com

**JD 608C CORNHEAD**  
Opposing knife rolls, had deck plates, brush chains, very nice. \$29,500. NO PAYMENT FOR 1 YEAR! (30) other corn heads available. Call 800-919-3322.

**JD 625F HYDRAFLEX**  
JD 625F Hydrflex grain head, FANCY. Full finger auger, good cutterbar, \$21,500. NO PAYMENT FOR 1 YEAR! (35) other JD 600 and 900 series heads. 800-919-3322.

**1993 REDHAUL SPRAYER TRAILER**  
1993 Redihaul sprayer trailer. Model 1627SPS. Pictures available, shed kept. \$4,200. Call Darrell at Ag Solutions of VA 804-514-9845.

**EQUIPMENT FOR SALE**  
2012 JD S70 combine, with auto steer, 1184 sep hours, 1956 engine hours; JD 635 FD header; JD 893 cornhead; Merritt 42 ft. Hopper bottom trailer; 1993 Freightliner truck with wet line; 37 ft. Mate dump trailer; JD 20 ft. Folding mower; 1996 Freightliner truck 40 ft. Drop deck trailer with 3 hoppers 950 bushel capacity; 1947 M 16 Studabager 6 wheel truck; JD MX7 mower Call 757-710-1473.

**3406 CASE IH**  
6 row 30" Case IH cornhead. Poly adjustable deck plates, hydraulic reel, field ready. \$24,500 OBO. Call 410-943-4220 or 410-463-2220.

**CASE IH 1084 CORNHEAD**  
Case IH 1084 Cornhead. 8 row wide, field ready, pictures available. \$5,500. Call Darrell Ag Solutions of VA. 804-514-9845.

**INTERNATIONAL 2350**  
International 2350 front end loader good paint 7' bucket is poor mounting brackets for IH 86 series and JD 4020. Pictures avail. \$2,000. Call 302-841-4598.

**BRILLION 16' SOLID ROLLER**  
Brillion 16' roller with transport. Very good shape, \$5,500. Pictures available. Call Darrell at Ag Solutions of VA 804-514-9845.

**FARM EQUIPMENT FOR SALE**  
John Deere 830 MOCO \$12,000.00 OBO; John Deere 328 small square baler \$8,000.00 OBO; Vicon Anxex 713 T double rotary hay rake \$6,000.00 OBO. Call 443-783-0700.

**CHEMIGATION PUMP**  
Sussex Irrigation chemigation pump, like new, shed kept, asking \$600.00 Call 302-249-4823 leave voicemail.

**NEW METAL ROOFING**  
For sale at bargain prices. Auction Barn at American Corner, Md. (410) 754-8826

**FOR SALE**  
New and used GT recirculating batch dryer. Call now for winter discounts. Buy now pay later. Call anytime 1-877-422-0927

**EQUIPMENT FOR SALE**  
JD 1560 no til drill w/ new markers. Asking \$25,500; International Fleetstar 2010A 10 wheeler w/ 20' dump grain body. \$11,000 OBO. Both pieces in exc. condition. Call 410-924-6907

**IRRIGATION EQUIPMENT**  
3" pipe 20' long-\$15; 3" pipe 30' long-\$25; 4" pipe 30' long-\$30; 3" pipe 30' long with sprinkler head and 24" extension-\$35; Some miscellaneous fittings available-\$20 each, email mattyla@gmail.com for photos, call 908-475-8322 for more info.

**JD 616C CORNHEAD**  
JD 616C Cornhead with 1,000 acres. \$53,000.00 Sold by RS Farms 410-829-1584.

**JD 1997 9600**  
JD 1997 9600 4WD. 4,619 engine hours. 3,397 separator hours. \$31,500.00. Sold by RS Farms 410-829-1584.

**CASE IH 1394 CAB TRACTOR W/ AIR**  
4990 hours. S.N.# 11502277, 65 HP, used for spraying. \$9,500.00. Pictures avail. Call Darrell, Ag Solutions of VA 804-514-9845.

### WANTED

**JD 7720 COMBINE**  
JD 7220 combine for parts, call 302-632-2424

### MERCHANDISE

**RECYCLED ASPHALT-RECYCLED CONCRETE**  
5 sizes to choose from. Great for parking lots, driveways & Chicken houses. Also available, Race track sand, Horse stall mix. Dependable Sand & Recycling. Call (410) 822-6363

### EMPLOYMENT

**HELP WANTED**  
Parts person/delivery driver. NON CDL. Full time +. Must have valid and clean license with copy of DMV record. Occasional heavy lifting. Basic computer skills are a must. Must be good with people and directions. Knowledge of commercial trucks and basic directions are a plus. Based in Dover, DE. If interested, please email contact info to [bmkw1984@yahoo.com](mailto:bmkw1984@yahoo.com)

### WAREHOUSE MANAGER/DELIVERY (RIDGELY)

We are looking for the right person to help our company grow. We are looking for somebody responsible and dedicated. The job consists of managing the warehouse and cleaning equipment for resale. The job also consists of making deliveries and receiving deliveries with forklift. Sale opportunities are available for extra commission. Job requires heavy lifting. Clean Drivers license / DOT card required no CDL needed, You may sometimes be required to work late and on weekends. Please submit your resume and contact information and any type of background information. [us@requiplc.com](mailto:us@requiplc.com) or call 443 953 0700

## EMPLOYMENT

### YODERS BOOM MOWING AND FIELD CLEARING

ponds, ditches, hedge rows, driveways, woods edge, overgrown field clearing, free estimates in MD & DE, over 16 years of service, give us the chance to amaze you! Call Ken at 443-480-0772.

### WWW. APPLETREESIGNS.COM

Bobthesignman@yahoo.com. End of the lane farm signs - Real Estate - Banners - Parking. Free shipping on all sign orders. Construction - Decals - Magnetics - Yard Signs - Safety. Lots more when calling as for Cheap Charlie to get your cheapest price. 410-708-1341.

### WORKING CATS LOOKING FOR EMPLOYMENT

Do you have a rodent problem? Free services available! Needing to place cats in a safe habitat in exchange for rodent control. Fully vetted, large selection, full set-up provided. Call 302-547-8720.

## SEED

**BARLEY COVER CROP**  
Barley cover crop for sale. Call 302-545-2400 for more information.

### RYE SEED

Bulk rye seed for sale. 87% germination. 10.50/ bushel. Call 410-708-4005.

## HAY & STRAW

### HAY AND STRAW

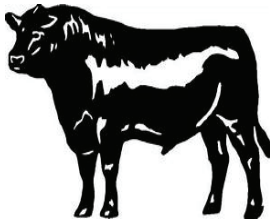
From one bale to tractor trailer load. Cecil H. Gannon & Sons, Inc. Call days 410-822-0069  
Nights: (410) 822-8381, (410) 822-5162, (410) 820-8453

## LIME

**AG LIME SPREADING**  
Hi-Mag & Hi-Cal dry lime  
Call Toll Free Day & Eve.  
CONESTOGA VALLEY  
LIME SPREADING INC.  
LANCASTER, PA.  
1-800-724-3277

## LIVESTOCK

**ANGUS COWS & BULLS FOR SALE**  
Contact Roseda Farm  
410-472-2697, [www.roseda.com](http://www.roseda.com), or email  
[roseda@roseda.com](mailto:roseda@roseda.com)



## EMPLOYMENT

### Agriculture Technician (Research)

#### University of Maryland Eastern Shore

The Department of Agriculture, Food and Resource Sciences invites resumes for a twelve month, full-time position. Under the direction of the Farm Manager, provides assistance to the daily operation of the UMES farms, and assists researchers with field research being conducted in plant and soil science at the University of Maryland Eastern Shore's Agricultural Experiment Station. Resumes will be accepted until the position is filled. All applicants must apply using the new online application system.

Please visit  
<http://umes.peopleadmin.com>  
to apply

## EMPLOYMENT

## EMPLOYMENT

Maryland Farm Bureau is currently seeking interested applicants for the following position(s):

#### Regional Field Manager – Eastern Shore

**POSITION SUMMARY:** The regional field manager shall provide quality association management and organizational development service and support to county Farm Bureau organizations in their assigned territory which includes support to county boards of directors, county committees, and individual county volunteer leaders to meet the needs of the membership relative to each respective county's strategic goals and objectives, consistent with the current Maryland Farm Bureau®, Inc. strategic plan. The Eastern Shore Regional Field Manager covers the following counties: Kent, Queen Anne's, Caroline, Talbot, Dorchester, Wicomico, Worcester, and Somerset.

Applications are due Wednesday, September 23rd, 2020. For more information visit [mdfarmbureau.com/careers](http://mdfarmbureau.com/careers)

## EMPLOYMENT

## EQUIPMENT

## EQUIPMENT

## EQUIPMENT

## EQUIPMENT

# Fall Harvest Specials



(2) 925 PLATFORMS  
1995, 1999



31 FT ROLLING HARROW



JD 893, 1996,  
W/KNIFE ROLLS AND HYDRAULIC  
DECK PLATES



(1989) 920 PLATFORM



(1984) JD 7720 COMBINE,  
4340 HRS



CASE 586H FORKLIFT 2884 HRS.



JD 9510 (1998 MODEL) 2 WD,  
3842 ENGINE HOURS,  
2839 SEP HOURS



(1983) JD 4450 140 HP  
7576 HOURS



SEVERAL FUNNEL BODY WAGONS



(1996) JD 918 PLATFORM  
LOCAL TRADE



(2011) JD 625 F



(2004) JD 9660 3260 ENGINE  
HOURS, 2231 SEP HOURS, 4 WD



(2009) JD 8130, 180 HP, 2566  
HOURS



(1990) JD 4555, 156 HP, 5287 HRS

**TAYLOR & MESSICK INC.**  
JOHN DEERE

325 Walt Messick Rd. Harrington, DE

302-398-3729

800-237-1272

Classified

ads in The

Delmarva

Farmer ... SELL!

Call Emily to

place an ad

today

(800)

634-5021



# Delmarva Farmer Business Directory

Find the services you need with speed, just look here in the directory.



**All Concrete Products**  
 U or J Road 3160-3175  
 Calvert 3110  
 4040 Road 3150-3155  
**276-228-5024**  
[www.allconcreteproducts.com](http://www.allconcreteproducts.com)

### Need a Diesel Mechanic?

Diesel Rebuilding  
 Service Plans  
 Maintenance



**LTS Diesel Services**  
 700 W. 10th St.  
 P.O. Box 1000  
 Cambridge, MD 21613  
 410-326-1000



**USA Gypsum®**

Quality. Value. Award-Winning Customer Service. Special Organic Ammonia Control. Special for Green + Silver Growers. Grower & Protected Tree Training. Annual seeding address & conditions. Gravel and soil summary.

Bags • Totes • Bulk • Delivery

717-335-0379 / Denver, PA  
[www.usagypsum.com](http://www.usagypsum.com)

Manufacturer



**RIDGE & VALLEY METALS**

- Rolling For Your Business -

(302) 678-2272  
 133 Rose Valley Road, Dover DE 19904

Metal Roofing • Siding • Accessories

Scott Insurance  
 "Covering Your Gaps"

Field Crops      Agribusiness      Agribusiness

Let our 50 years of experience work for you

COMMERCIAL LIABILITY INSURANCE  
 FARM LIABILITY INSURANCE  
 FARM PROPERTY INSURANCE  
 FARM AUTO INSURANCE  
 FARM LIFE INSURANCE  
 FARM RETIREMENT PLANS  
 FARM ESTATE PLANNING

Seaside, VA, PA, DE, MD, IL, NJ

AMERICA'S BUSINESS TO:

**USAB2C**

AMERICA'S BUSINESS TO CONSUMERS

Toys, home goods, clothing, tools and more  
 "American Made"

[www.USAb2c.com](http://www.USAb2c.com)



**BLAZEJAK REPAIRS**

Repair and Service Tractors, Tractor Equipment and Lawnmowers

Richard Blazejak  
 14205 Lakeshore Road  
 Calvert, MD 21816

410-324-0295

**DELMARVA KENWORTH**

PARTS • SERVICE • TRUCKS  
 50+ YEARS OF CUSTOMER SERVICE  
 302-674-2300

## EXPERTISE TO GET THE JOB DONE RIGHT!

From design through final construction, ABC Tank, Inc. is a single source company you can trust. For agricultural and commercial operations the trailer is as easy as ABC Tank.




**PRODUCTS:**

- ✓ Grain Trays
- ✓ Grain Silos
- ✓ Material Handling
- ✓ Hoppers
- ✓ Pails

**SERVICES:**

- ✓ System Design
- ✓ Mill and Job Service

108 Lanes Rd, York, PA 17408 • Toll Free (888) 238-6768 • [www.abctank.com](http://www.abctank.com)

Advertise in the Business Directory for only \$40 per week! Call Tiffany or Emily (800) 634-5021